

Akraino KNI Blueprint family Release 4 Review

December, 2020

Ricardo Noriega - PTL KNI Blueprint Family



Kubernetes Native Infrastructure Blueprint family

Kubernetes-
managed infrastructure

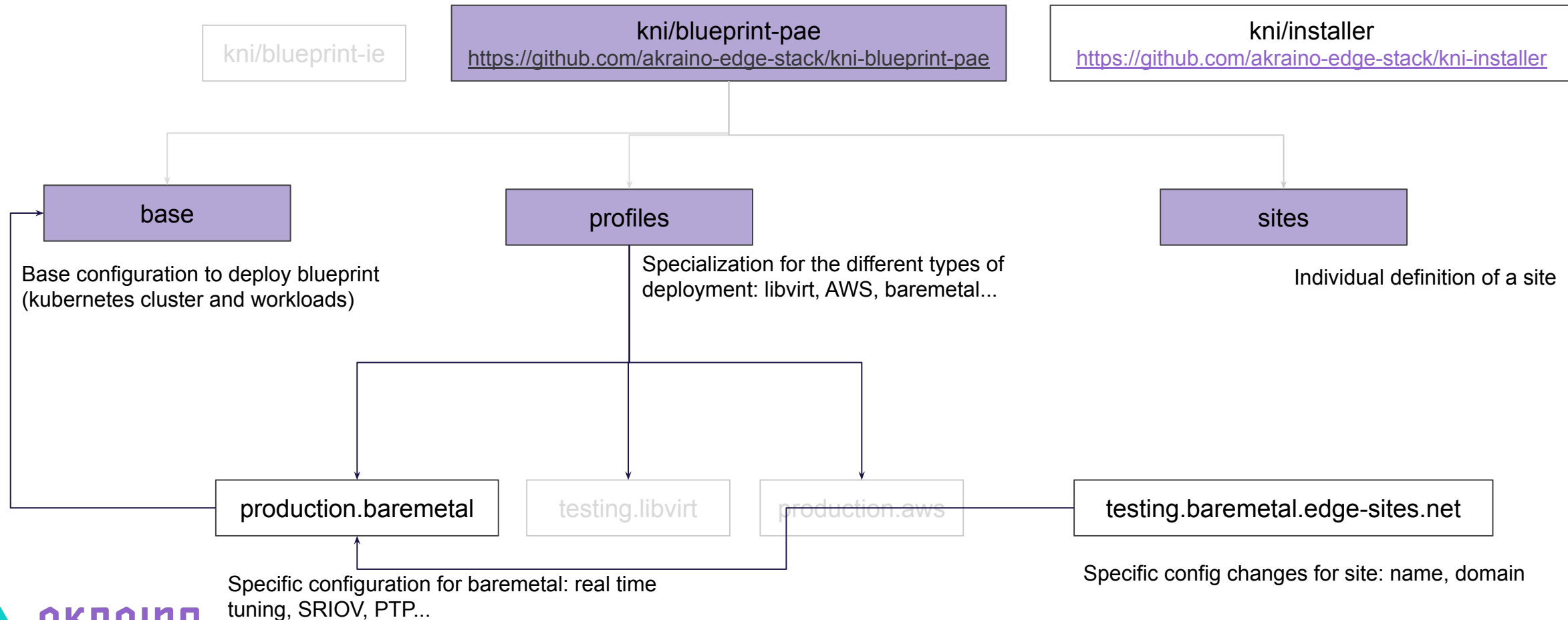
built on the rich
tooling & best-practices
of Kubernetes
community & ecosystem

rich orchestration and lifecycle
management

optimized for
Kubernetes-native workloads,
allows hybrid deploys with
Kubevirt



Kubernetes Native Infrastructure Blueprint structure



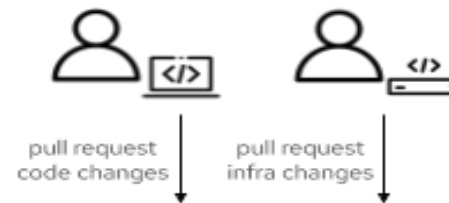
Provider Access Edge blueprint

- Small footprint deployments able to **host** NFV (vRAN) and MEC
- Remote worker nodes architecture.
- Requirements: Lightweight, self-managing clusters - Support for VNF (via KubeVirt) and CNF common infrastructure - Support for multiple networks, SR-IOV, PTP New features for this cycle:
 - Refresh component dependencies
 - Support for real-time workloads using RHCOS-RT
- OpenAirInterface working on KNI PAE blueprint:
<https://www.lfedge.org/2020/08/04/openairinterface-end-user-case-study-running-5g-on-akrainos-kni-provider-access-edge-blueprint/>



Industrial Edge Blueprint

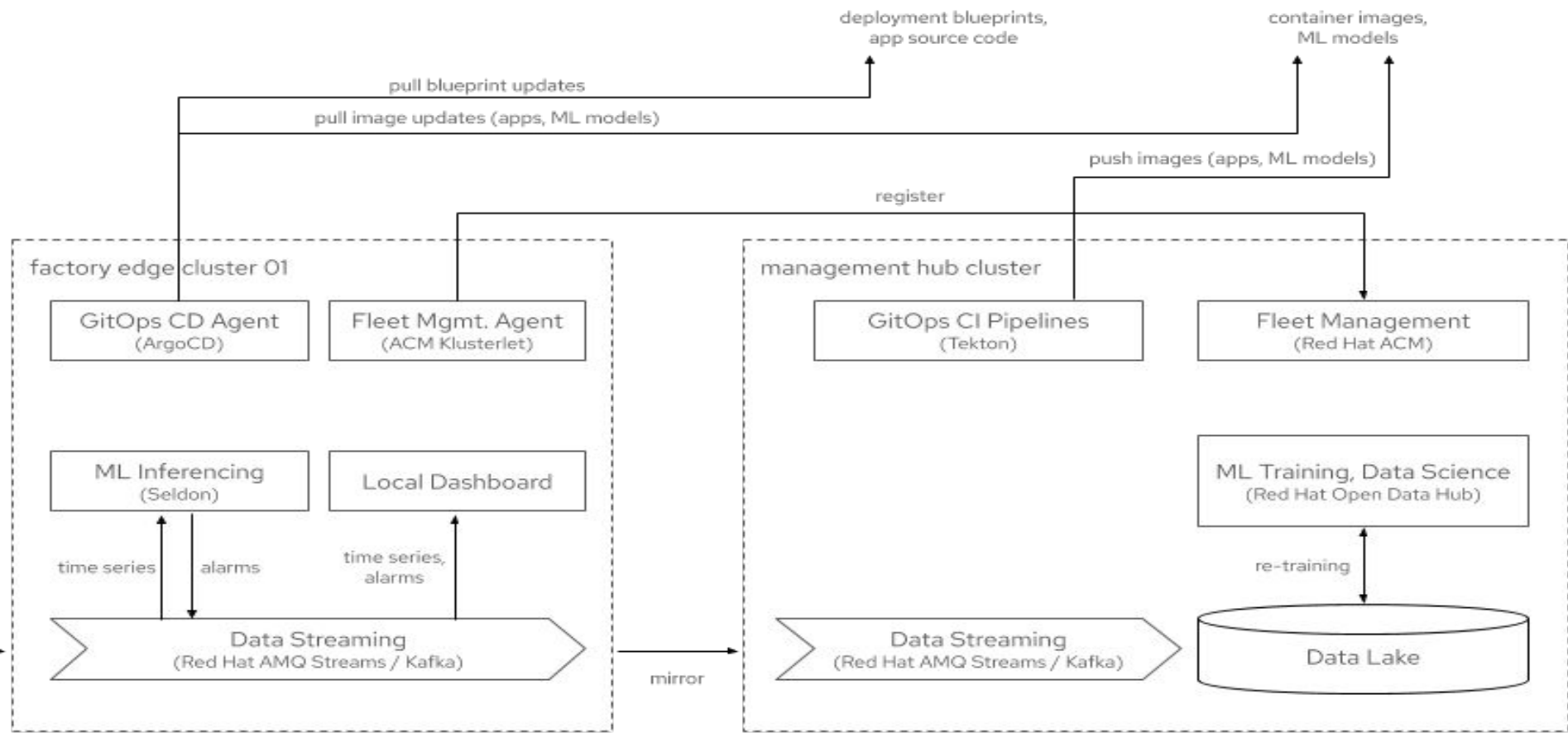
- Boosting manufacturing efficiency and product quality with AI/ML, edge computing and K8s.
- Requirements: real-time processing data, failure prediction, security, etc.
- Two different blueprints:
 - Management Hub (big centralized cluster)
 - Edge Computing remote sites (3 nodes clusters)
- Pushing AI/ML to the edge via gitops and blueprints.
- Validation via CI/CD on central clusters



deployment blueprints,
app source code



container images,
ML models

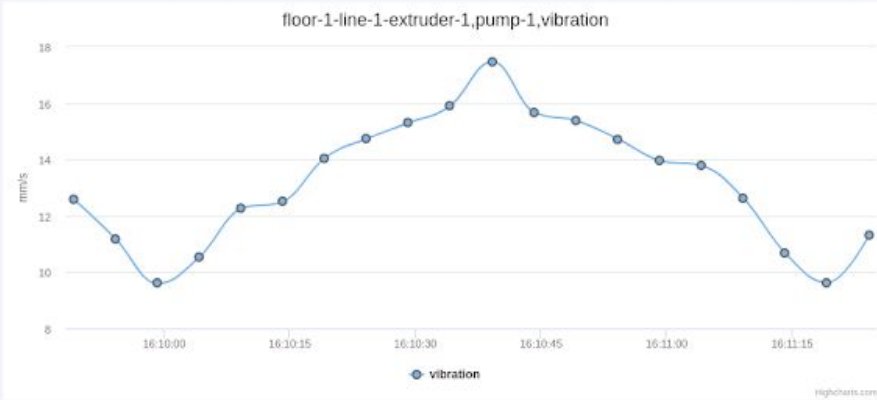
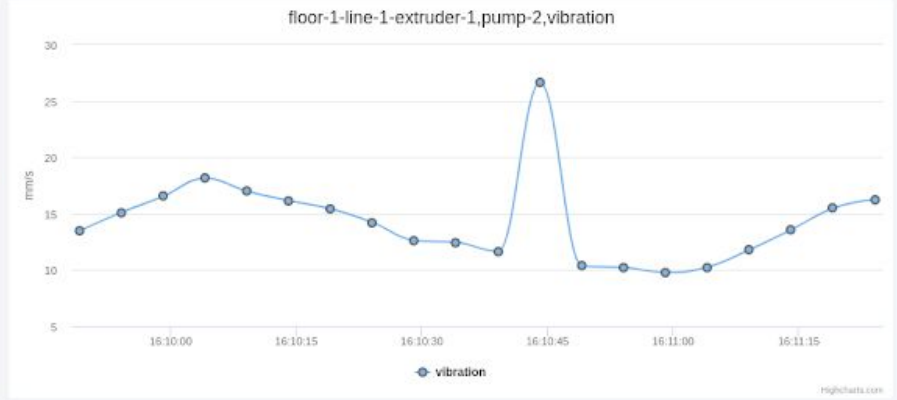
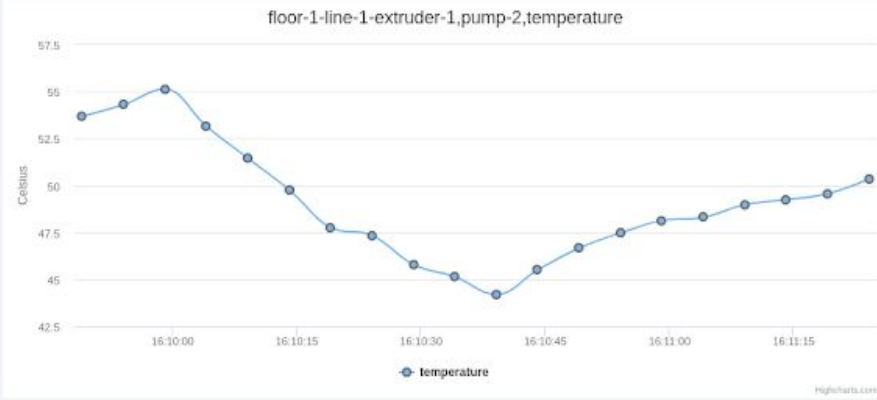


Industrial Edge Blueprint

- blueprint-management-hub components:
 - Advanced Cluster Manager (ACM)
 - Tekton (Cloud Native CI/CD Pipelines)
 - ArgoCD
 - OpenDataHub (AI/ML Marketplace)
 - etc...
- blueprint-ie components:
 - ACM self-registration process
 - line server (MQTT Emulation)
 - Data Streaming components (Kakfa, MirrorMaker, etc.)

Home

Realtime Data



Vibration ALERT!
Please check the pump and and submit a ticket.

Thank you!

