

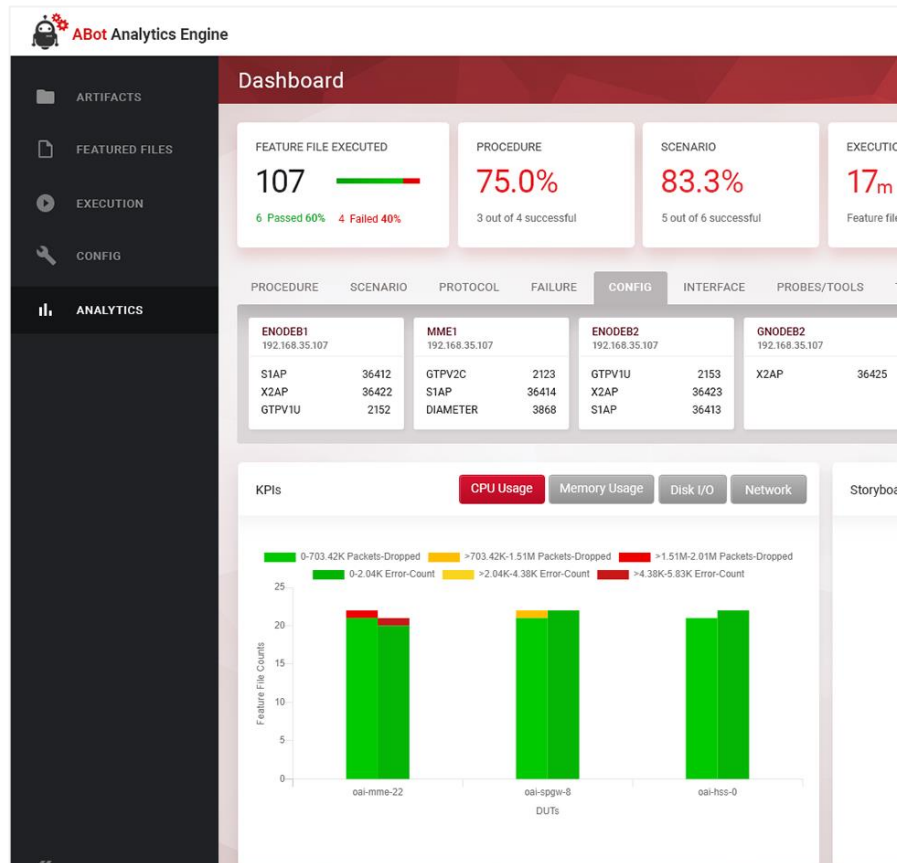
ABot

Analytics

ABot Analytics

ABot Analytics, uses **statistical analysis and deep learning models** to provide insight of the test execution data. It **correlates** data from **NFVI, Infrastructure and VNFs** for deeper analysis. Data **correlation is done on several dimensions** - **call flows** executed, mobility **nodes** involved, system **KPI** of the associated infrastructure, **log** messages from the various nodes. ABot Analytics **compares** the similar test execution data with **prior test data** for inference.

ABot Analytics presents an **interactive dashboard view** of the test cases analyzed. Mobility related insight like **procedure, scenario, protocol interface, messages exchanged**, etc. are presented along with their maturity quality analysis. Configuration and system KPI data of the test cases are also ingested and presented in graphical manner to provide **insight on the system utilization**. ABot Analytics analyzes and **classifies failed test cases** by: error in test case authoring, configuration error and application failure. **Ladder diagram representation** of the test cases are generated for ease of understanding. Finally, test maturity statistics like **build by build maturity, coverage maturity, defect analysis**, etc. are also provided. The objective of ABot Analytics is to provide a deeper insight of the test cases executed from different dimensions.



Key Features

- ✓ Identifies procedure, scenario, protocol interface, messages from analyzing the test execution data
- ✓ Provides maturity index of mobility components based on pass/fail analysis of the test data
- ✓ A view of the system configuration for the test case, classified by the NFV platform layers and/or the hardware resources utilized
- ✓ System KPI data is presented in a graphical manner classified by nodes involved and categorized by test cases
- ✓ Ladder diagram of the call flow with messages exchanged between the involved nodes is presented
- ✓ Test case failure analysis is provided
- ✓ A separate dashboard panel for Test maturity statistics