

AI Edge

Hechun Zhang, Baidu



Agenda

- › AI Edge Introduction
- › AI Edge Usecases
- › AI Edge Network Architecture
- › AI Edge Commercial Deployments

AI Edge Blueprint

- AI Edge Blueprint focuses on establishing an open source MEC platform combined with AI capacities at the Edge side
- It could be used for safety, security, and surveillance sectors. And also scenarios in Intelligent Vehicle-Infrastructure Cooperation System.
- 2 Projects in Akraino:
 - [Approved: School/Education Video Security Monitoring](#)
 - [Proposed: RoboTaxi](#)
- Baidu is also preparing for another educational project together with partners in Akraino.
- Partners:
 - [Intel](#)
 - [Arm](#)

AI Edge Usecases

Concentration Analysis Helmet Detection



Call Detection



Smoking Detection



Hair Detection



Fire Detection



autonomous ride sharing



low-speed unmanned logistics vehicles



unmanned minibuses



unmanned buses



Valet Parking

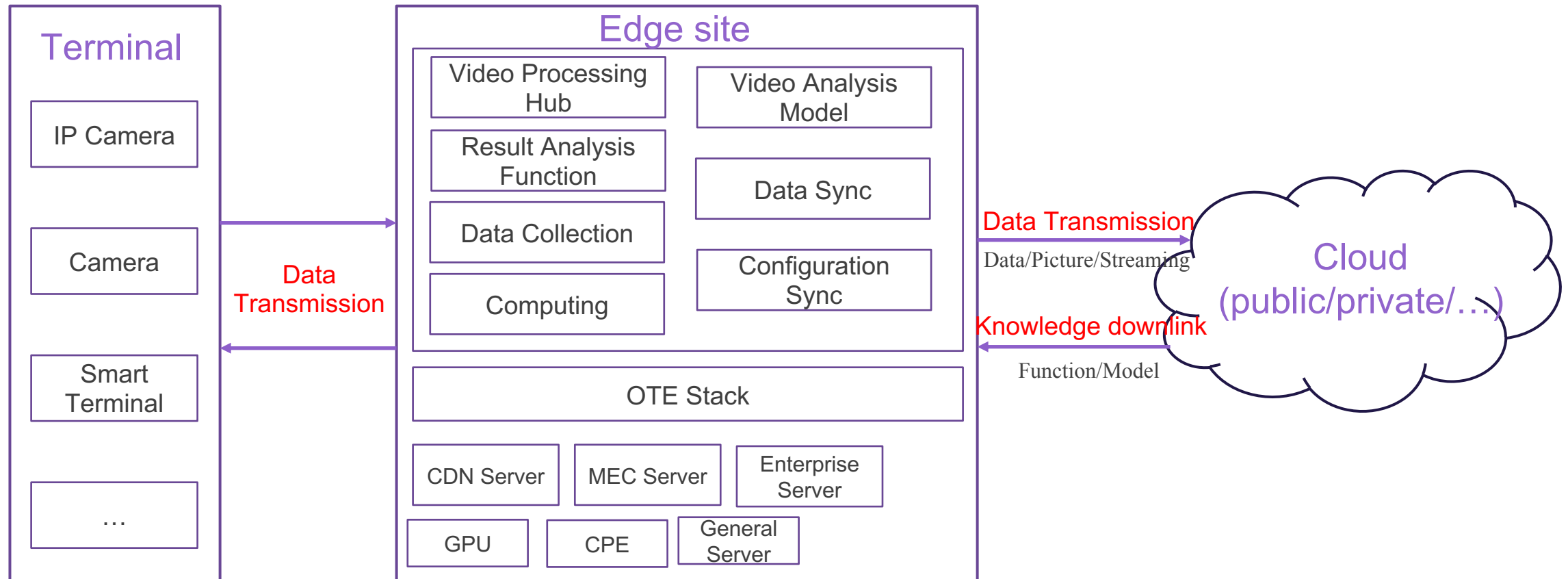


Regional upgrade for autonomous driving vehicles

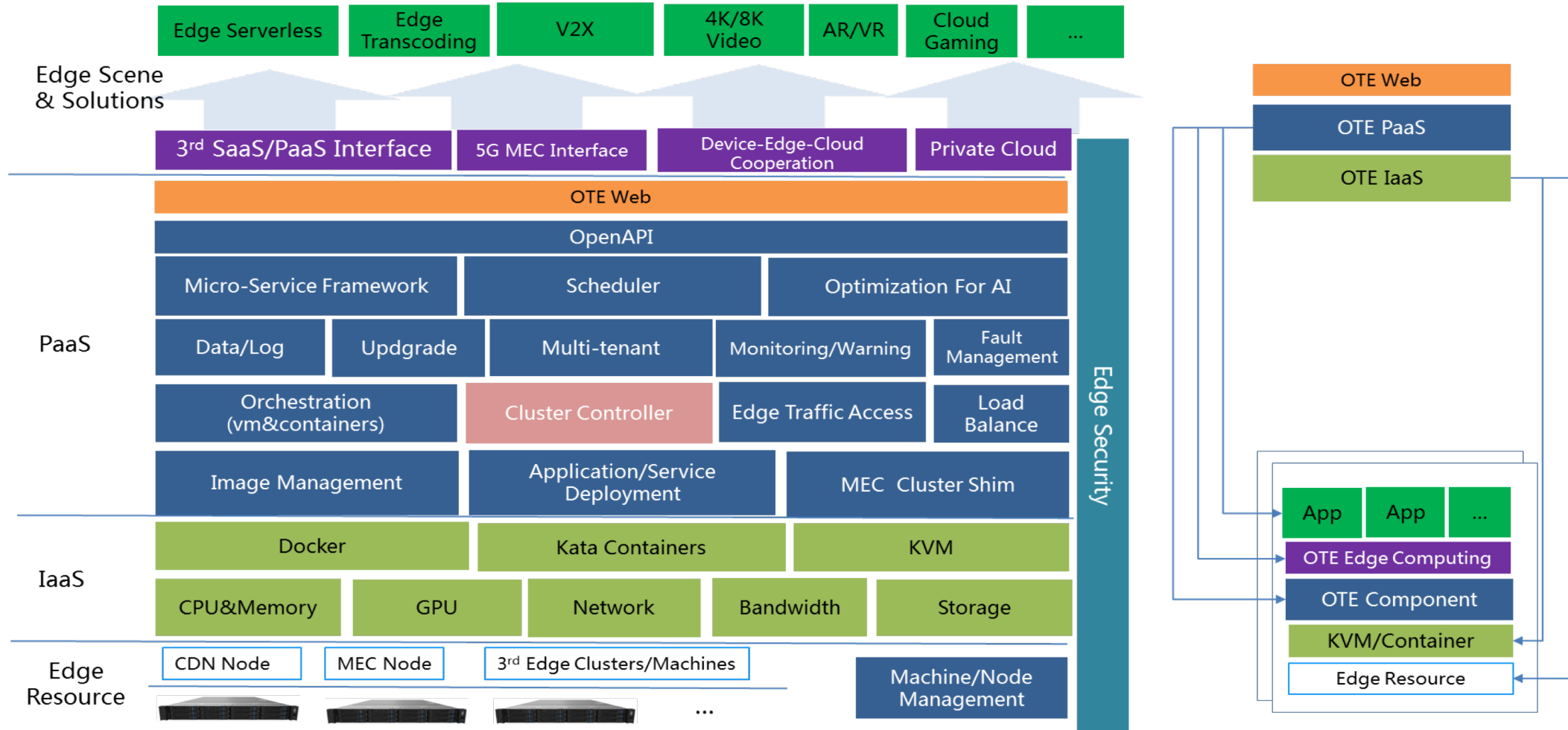


Network Architecture

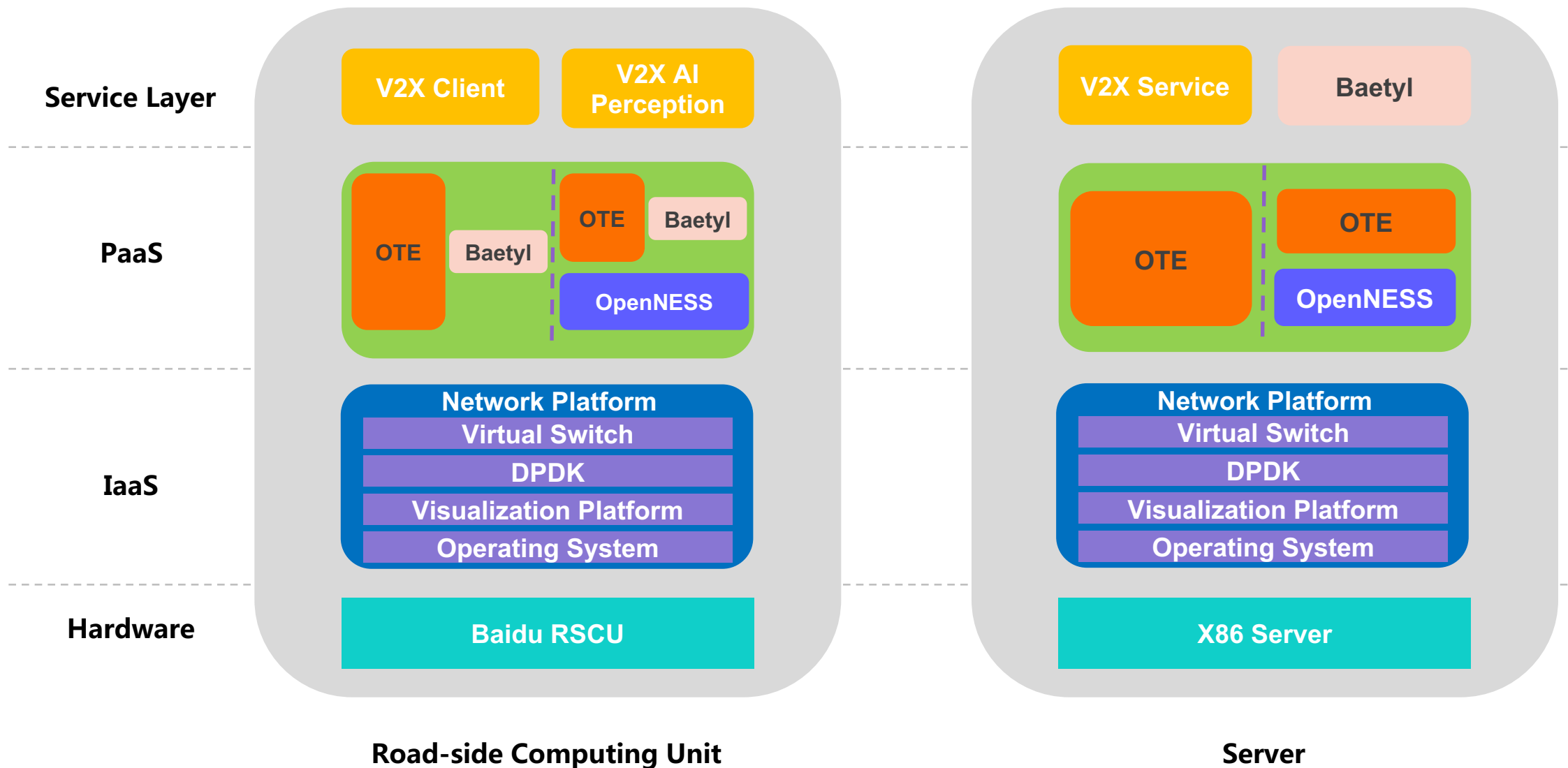
- School/Education Video Security Monitoring



MEC Platform Software Architecture(O TE)



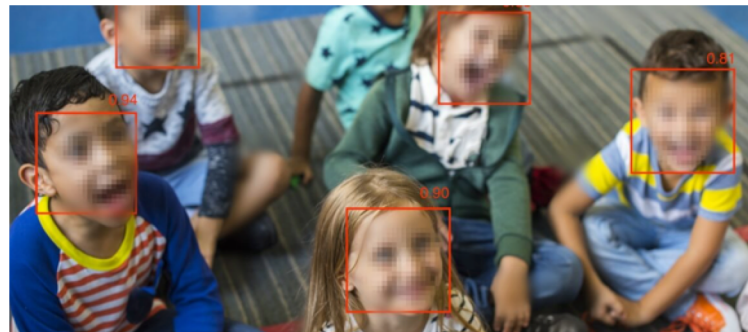
RoboTaxi MEC platform software architecture



AI Edge Commercial Deployment

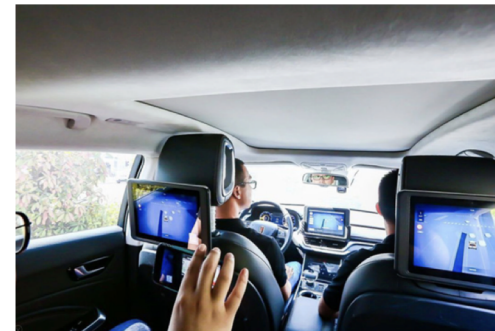
- School/Education Video Security Monitoring

The School/Education Video Security Monitoring blueprint has been deployed in Beijing, Shanghai, Hangzhou(Zhejiang Province), and many other cities in China.



- RoboTaxi

The RoboTaxi Blueprint has been deployed in Changsha city, Hunan Province. And there are also several cities are in the process of deploying.



For More Information, Please
Visit www.akraino.org

谢谢！
Thank You !

